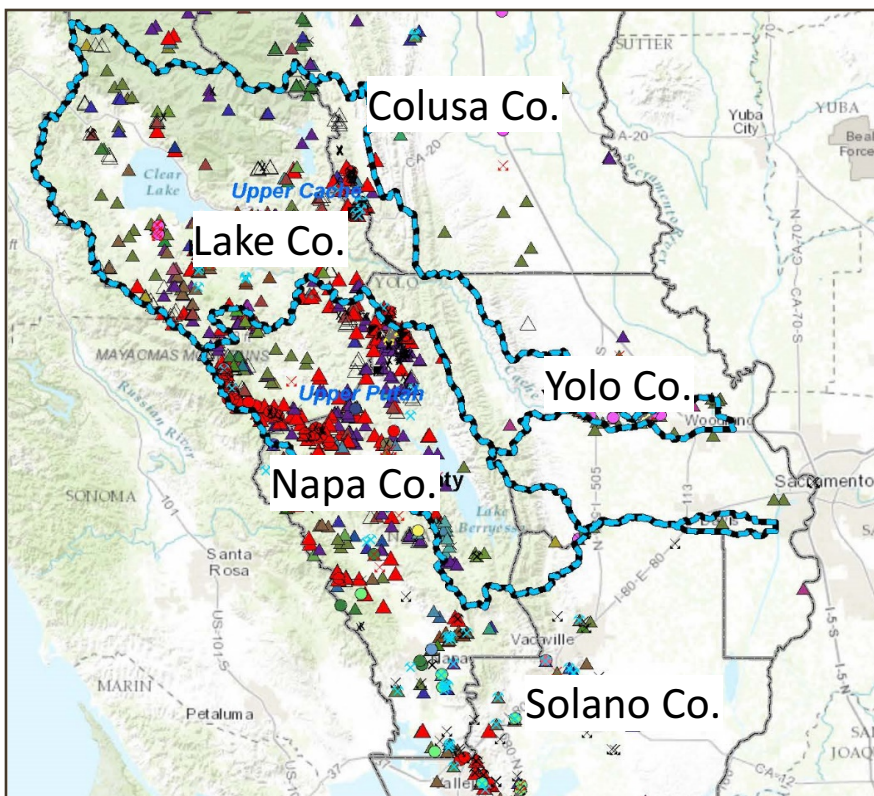


People have mined throughout the upper regions of the Cache Creek and Putah Creek watersheds since the 1850's. To date, the vast majority of the mines in this region for mercury, gravel and other materials are abandoned.

Abandoned mine sites present physical hazards, barren landscapes, and significant historical artifacts. Water draining from such sites can be highly acidic— stressing plants and animals, altering chemical properties and natural reactions, and dissolving metals. Some metals, such as nickel, are directly toxic to organisms. Others, such as mercury, are toxic after they transform and magnify in concentration in fish.

The Westside Brownfields Coalition Assessment Project is engaging local communities in and around the Cache and Putah Creek Watersheds to:

- Create an interactive database of mine sites
- Assess prioritized mine-scarred sites in the area
- Evaluate sites for potential cleanup
- Create an overall brownfields cleanup plan for the region



*Mine entrance*



*Decaying ore processing structures*

## Be Part of the Process!



Join a network of engaged community members to plan how to clean up these sites. Sign up as a project contact to receive project updates and meeting notices.



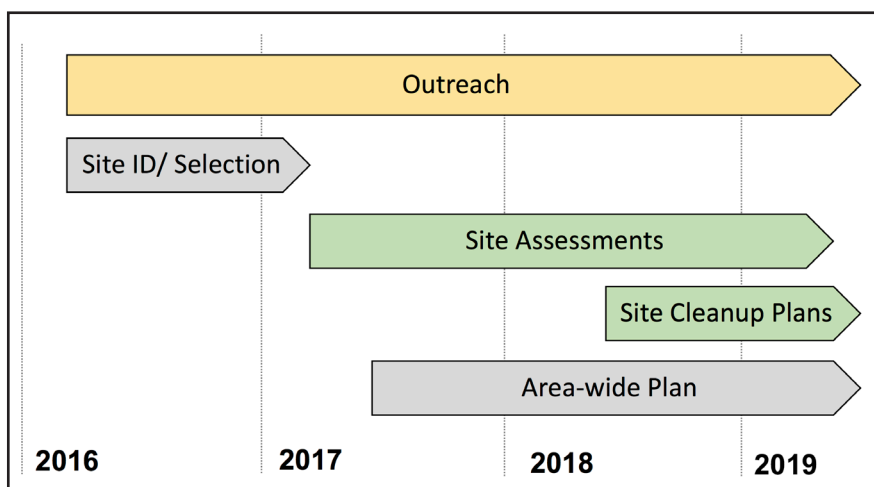
Visit our website for more details and to sign up:  
<http://www.westsideirwmbrownfields.org/>

# Westside Brownfields Coalition Assessment Project

## What are Brownfields?

- Brownfields are properties that are difficult sites for expansion, redevelopment, and reuse due to contaminants such as hazardous materials, pollutants, controlled substances, petroleum or mine waste.
- Mine-scarred lands pose environmental and safety hazards on-site and downstream.
- Exposure to toxic materials from mine-scarred lands can harm human and wildlife health.

*Photo: Abbott-Turkey Run mine site by Hwy. 20 prior to cleanup*



Through a project website, a series of stakeholder meetings and public workshops, online mapping, and other resources, the project will:

1. Increase public understanding of land use issues related to brownfields; and
2. Prioritize and plan cleanup projects for mine-scarred sites consistent with regional planning objectives.



*Sediment plume at Lake Berryessa*

## What are Brownfields?

**Solano County Water Agency**  
**Chris Lee**  
Project Lead  
clee@scwa2.com  
707-455-1105

**McCord Environmental, Inc.**  
**Stephen McCord**  
Project Manager  
sam@mccenv.com  
530-220-3165

**Local Government Commission**  
**Danielle Dolan**  
Facilitator  
ddolan@lgc.org  
916-448-1198 ext. 311

Funded by US EPA's Brownfields Assessment Program  
No risk of enforcement — entirely voluntary, free technical assistance!